

CLASSIC AND MATIC
PRODUCT OVERVIEW
Temperature control units



Our product overview

Customised to your industry



Die casting



Plastics & injection moulding



Extrusion



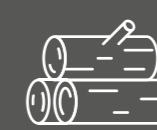
Pharmaceutical & chemical



Rubber & silicone



Food



Wood



Lamination, printing & textiles

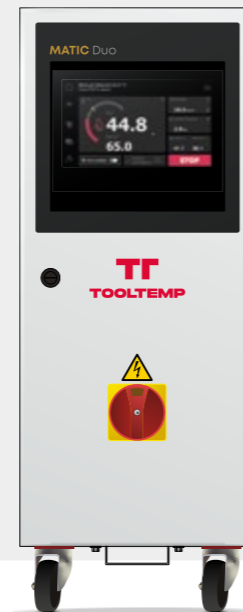
UNIVERSAL temperature control units

Heat transfer medium water and oil
up to 90°C/150°C

The universal temperature control units impress with their ease of use and high performance. Designed for use with water or oil, they provide a versatile range of applications with a heating capacity ranging from 3 to 18 kW.

CLASSIC

MATIC



Page 8-10

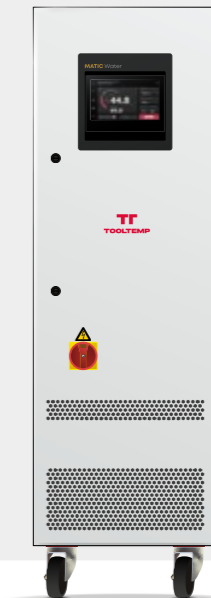
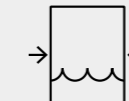
PRESSURISED water temperature control units

Heat transfer medium water up to 160°C

By utilizing pressurized water, these temperature control units allow for high maximum temperatures. With a heating capacity ranging from 6 to 48 kW, they offer a versatile solution for various applications.

CLASSIC

MATIC



Page 14-16

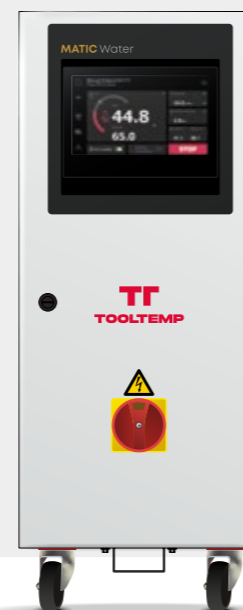
WATER temperature control units

Heat transfer medium water up to 90°C

The water temperature control units are distinguished by their high reliability and user-friendly operation. With a heating capacity ranging from 3 to 144 kW, they are suitable for a wide variety of applications.

CLASSIC

MATIC



Page 11-13

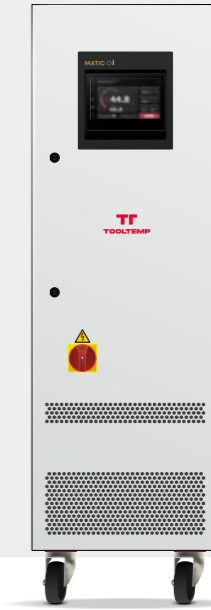
OIL temperature control units

Heat transfer medium oil up to 360°C

The oil temperature control units impress with maximum temperatures reaching up to 360 °C and heating capacities from 8 to 144 kW, even under extreme conditions. Their design meets all safety requirements for high-temperature operation.

CLASSIC

MATIC



Page 17-21

CLASSIC

Product range

Our CLASSIC temperature control and cooling units are perfect as stand-alone solutions. They are both robust and easy to maintain. The use of proven technologies guarantees the durability of this product group.

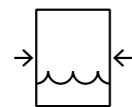
Our CLASSIC range of temperature control units comes with digital networking capabilities. Units from our CLASSIC range are ideal solutions for applications in which your temperature control unit's main function is to control the temperature of the circulation medium.



1 Universal temperature control units
CLASSIC Duo, Heat transfer medium water and oil
up to 90°C/150°C



2 Water temperature control units
CLASSIC Water, Heat transfer medium water
up to 90°C



3 Pressurised water temperature control units
CLASSIC Water, Heat transfer medium water
up to 160°C



4 Oil temperature control units
CLASSIC Oil, Heat transfer medium oil
up to 360°C

MP-888

Controller

Structure

- Compact controller with predefined machine settings (according to appliance type)
- PID control with 2-point cooling switchable to PID cooling

Operation and display

- Simple operation via key combinations
- Clear display of operating mode, setpoint actual temperature and flow rate
- Physical units selectable

Functions and security

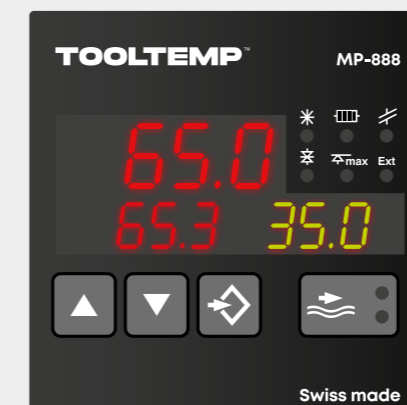
- Visual error messages
- Limit value monitoring for excessive temperature deviation between setpoint and actual value
- Flow monitoring

Interfaces

- Analogue: entrance 0-10 V, (0)4-20 mA
exit 0-10 V

Technical data

- Control voltage: 230 V
- Languages: numerical parameters



MP-988

Controller

Structure

- Compact controller with predefined machine settings (according to appliance type)
- PID control with 2-point cooling switchable to PID cooling

Operation and display

- Simple operation via key combinations
- Clear display of operating mode, setpoint actual temperature and flow rate
- Display of up to three measuring points
- Physical units selectable

Functions and security

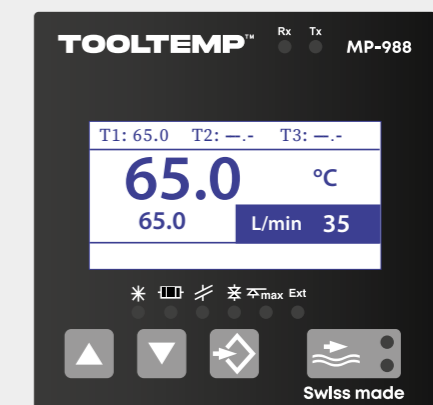
- Visual error messages
- Limit value monitoring in the event of excessive temperature deviation between setpoint and actual value
- Flow monitoring
- Optional control: tank temperature, return temperature or mould temperature
- Ramp control: 25 temperature points, 8 curves

Interfaces

- Analog: 0-10 V, (0)4-20 mA, MP-988
- RS-485, RS-232, Current Loop, CAN, MP-988
- or Profibus
- or Profinet

Technical data

- Control voltage: 230 V
- Languages: numerical parameters



MATIC

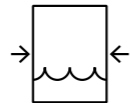
Product range

The MATIC range of temperature control units covers all the needs of production environments leveraging industrial networks. The entire MATIC product range is equipped with the new and in-house developed IRIS controller, offering a broad range of connectivity features. It covers the time-tested serial and digital/analog interfaces, classical fieldbus protocols, as well as current state-of-the-art industrial ethernet (Profinet, EtherNet/IP).

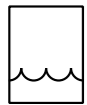
The MATIC temperature control units put your economic goals into practice. The energy-saving eco mode leverages the latest-generation variable-frequency drive installed in every MATIC unit. More intelligent look-ahead temperature control prevents unnecessary energy expenses for heating and cooling. All the while our proven immersed heaters offer a 100% conversion efficiency. In short, MATIC brings the energy consumption of your temperature control process, as well as downtimes, to a minimum.



1 Universal temperature control units **MATIC Duo**, Heat transfer medium water or oil up to 90°C/150°C



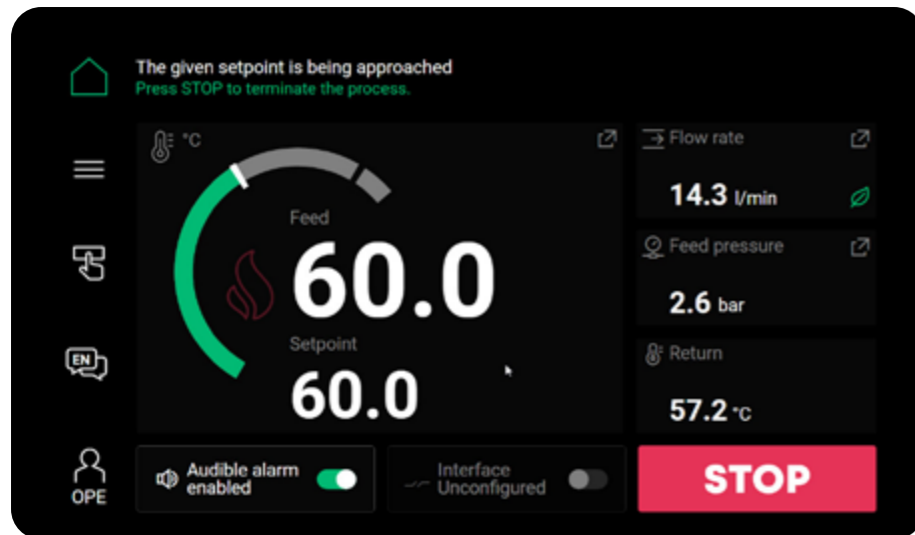
3 Pressurized water temperature control units **MATIC Water**, Heat transfer medium water up to 160°C



2 Water temperature control units **MATIC Water**, Heat transfer medium water up to 90°C



4 Oil temperature control units **MATIC Oil**, Heat transfer medium oil up to 360°C



IRIS Control System

IRIS

control system

Modular design

- Interfaces and options are flexibly expandable
- The controller automatically recognises new components
- One-click software updates via USB stick

Simple operation

- 7-inch touchscreen with interactive user guidance
- Foldable display for ergonomic working
- Predefined actions for all common processes such as mold emptying, end of shift, emergency cooling
- Languages: EN, DE, FR, IT, ES, NL, CS, PT, HU, PL, SV, HBS, JA, TR, ZH, RO (others through future software updates)

Continuous process monitoring

- User concept with three user levels and password protection
- Error messages with recommended actions
- Limit value monitoring
- Automatic adjustment of the pump rotation direction
- Automatic fill level monitoring – Dry run protection
- Monitoring of the process variables: Temperature, pressure, flow rate

Customized functions

- Programmable time-resolved recipes
- Physical units and date format selectable
- Flexible timer functionality
- Export of the progression of error and process variables
- Export and import of the controller configuration

Energy efficient

- Tailored pump performance thanks to a frequency converter fully integrated into the control logic
- Three pump control modes (Auto/Eco, flow rate setpoint, direct power setpoint)
- System-optimised control with energy-saving switching logic

Intelligent interfaces

- OPC UA: Euromap 82.1 standard
- IO1: RS-232/485, CL 20 mA, CAN
- IO2: Profibus, Profinet, EtherNet/IP
- IO3: Analog (0-10 V, 0/4-20 mA), digital (0/24V inputs, 0/230V relay outputs), external temperature sensor

Technical data

Human-Machine Interface (HMI)

Touch screen	7-inch display with state-of-the-art PCAP touch technology
Display	IPS panel with specially increased luminosity (1000 cd/m ²), resolution 1024x600
Protective glass	Frosted to prevent reflections, optical bonding with display to maintain full luminosity
Impact resistance class	IK06 (IEC 62262) – impact energy of 1J
Protection class	IP54 (EN 60529) – against dust and splash water on all sides
Audible alarm	Volume max. 110 dB at 3.2 kHz
Connection	Proprietary multifunction cable

Controller modules

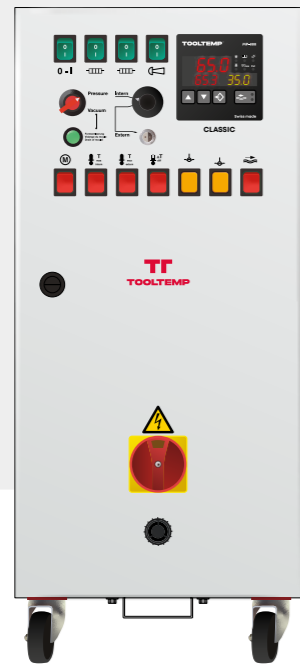
Protection class	IP20 (EN 60529) – Protection against accidental contact
Power supply and control voltage	24 V DC
Connection	Ribbon cable for proprietary data bus, power supply and reset line
Electromagnetic compatibility	Classified as Class A, Group 1 and tested in accordance with EN 61326-1, EN 6100-6-2 and -6-4, EN 55011 (55011:2016 + A1:2017 + A11:202 + A2:2021)
Type tests	Carried out in accordance with EN 61010-1 and -2:2011



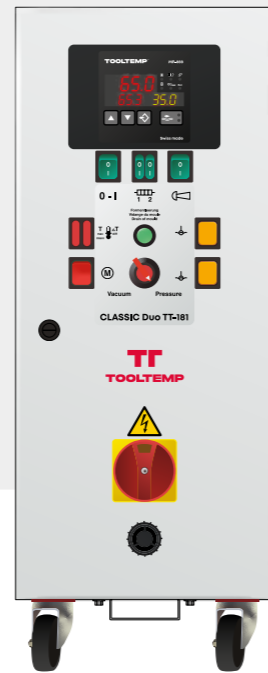
1 Universal temperature control units **CLASSIC** Duo, **MATIC** Duo,
Heat transfer medium water and oil up to 90°C/150°C

Product	Max. temperature water °C	Max. temperature oil °C	Max. filling amount l	Heating capacity water kW	Heating capacity oil kW	Pump capacity l/min.	Pump pressure bar	Cooling system Tubular heat exchanger At flow temperature kW °C	Suction capacity vacuum mWS	Controller	Temperature sensor	Flow control	Leakstopper device	Mould drain	Temperature regulation at the consumer	Time-limited water refill	Automatic refill	Level control	Visual fault indications	Acoustic warning	Pressure regulation	0-10 V input/output	4-20 mA input	4-20 mA output	RS-232, RS-485, Current-Loop, CAN	Profibus interface	Profinet interface	Ethernet/IP	OPC-UA interface	Web interface (LAN cable, WiFi)	
CLASSIC Duo TT-181 E	90	150	7	9	3	60	4	35 90 8		MP-888 FeKo Typ J		-	■	■	-	-	■	■	■	■	-	■	■	□	-	-	-	-	-	-	
CLASSIC Duo TT-188 E	90	150	7	9	3	60	4	35 90 8			■	■	■	-	-	■	■	■	■	■	-	■	■	□	-	-	-	-	-	-	
CLASSIC Duo 90/150 12 E *	90	150	20	12	6	60	4	45 90 8			■	■	■	■	■	■	■	■	■	■	■	-	■	■	□	-	-	-	-	-	
CLASSIC Duo 90/150 12 H *	90	150	20	12	6	60	7	45 90 8			■	■	■	■	■	■	■	■	■	■	■	-	■	■	□	-	-	-	-	-	
MATIC Duo 90/150 9 E	90	150	7	9	9	60	4	35 90 8		IRIS Pt100		■	■	■	□ ³	■	■	■	■	■	■	■	□ ³	□ ³	□ ³	□ ¹	□ ²	□ ²	□ ²	■	■
MATIC Duo 90/150 18 E	90	150	20	18	18	60	4	45 90 8			■	■	■	□ ³	■	■	■	■	■	■	■	■	□ ³	□ ³	□ ³	□ ¹	□ ²	□ ²	□ ²	■	■
MATIC Duo 90/150 18 H	90	150	20	18	18	60	7	45 90 8			■	■	■	□ ³	■	■	■	■	■	■	■	■	□ ³	□ ³	□ ³	□ ¹	□ ²	□ ²	□ ²	■	■

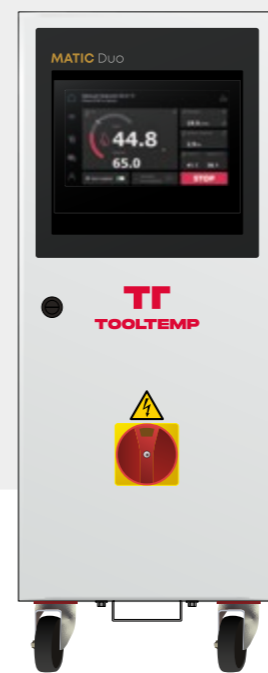
■ standard, □ optional, - not possible
 I/O Modul 1, Manufacturer protocols (RS-232, RS-485, CAN, Current-Loop)
 I/O Modul 2, Profinet, EtherNet/IP, Profibus
 I/O Modul 3, 3 x Digital output (changeover switch), 2 x Digital input (on/off), 2 x Analog output, 2 x Analog input, 1 x ext. Temperature sensor
¹ included in I/O module 1, ² included in I/O module 2, ³ included in I/O module 3
 * Former TT-168 12 kW



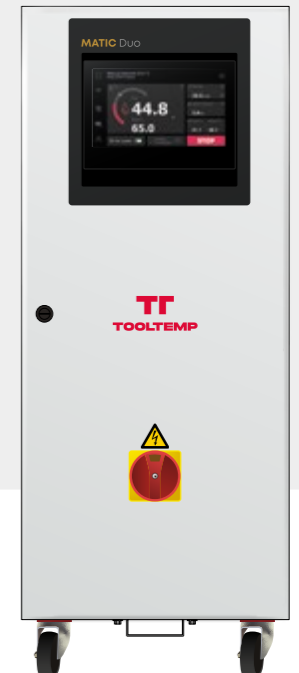
CLASSIC Duo 90/150 12 E H



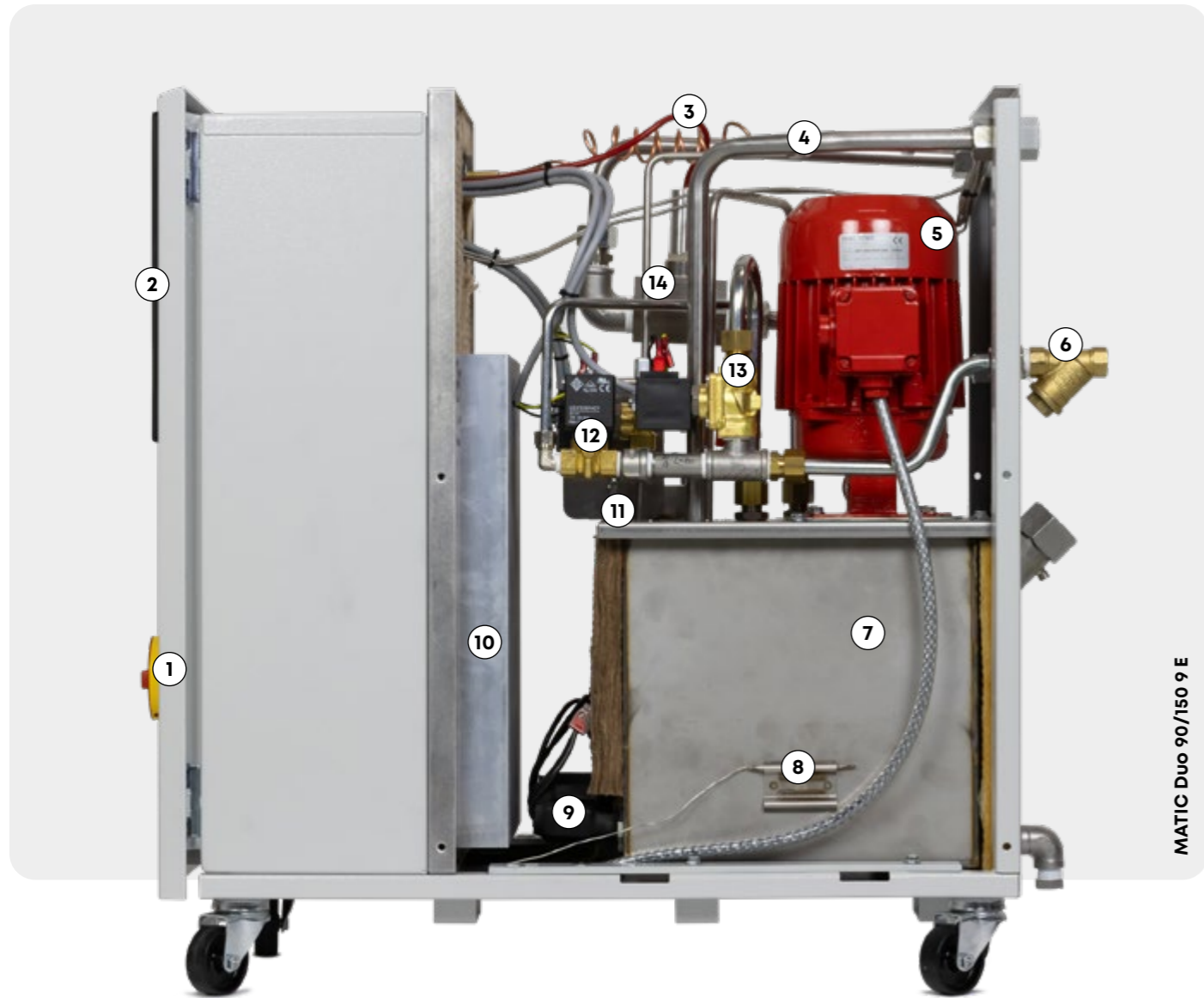
CLASSIC Duo TT-181



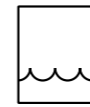
MATIC Duo 90/150 9 E



MATIC Duo 90/150 18 E



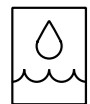
MATIC Duo 90/150 9 E



WATER temperature control units

Heat transfer medium water up to 90°C

- | | |
|-----------------------------|------------------------|
| ① Flow meter | ⑧ Main switch |
| ② Pump | ⑨ Water-filter |
| ③ Non-return flap | ⑩ Float |
| ④ Solenoid valve | ⑪ Heater |
| ⑤ Temperature sensor flow | ⑫ HMI |
| ⑥ Return temperature sensor | ⑬ Plate heat exchanger |
| ⑦ Heat exchanger | |



UNIVERSAL temperature control units

Heat transfer medium water and oil up to 90°C/150°C

- | | |
|------------------------------|------------------|
| ① Main switch | ⑨ Heater |
| ② HMI | ⑩ Cooler |
| ③ Temperature sensor flow | ⑪ Float |
| ④ Return temperature sensor | ⑫ Solenoid valve |
| ⑤ Pump | ⑬ Solenoid valve |
| ⑥ Water-filter | ⑭ Flow meter |
| ⑦ Tank | |
| ⑧ Safety temperature limiter | |



MATIC Water 90 45 K



2 Water temperature control units

CLASSIC Water, MATIC Water, Heat transfer medium water up to 90°C

Product	Max. temperature	Max. filling amount	Heating capacity	Pump capacity	Pump pressure	Cooling system	Tubular heat exchanger	Plate heat exchanger	Direct cooling	At flow temperature	Suction capacity vacuum	Controller	Temperature sensor	Flow control	Leakstopper device	Mould drain	Temperature regulation at the consumer	Time-limited water refill	Automatic refill	Level control	Visual fault indications	Acoustic warning	Pressure regulation	0-10 V input/output	4-20 mA input	4-20 mA output	RS-232, RS-485, Current-Loop, CAN	Profibus interface	Profinet interface	Ethernet/IP	OPC-UA interface	Web interface (LAN cable, WiFi)				
	°C	l	kW	l/min.	bar	kW	kW	kW	°C	mWS																										
CLASSIC Water TT-170 L	90	5	3	19	2.9	^{a)}	30	-	-	90	-	MP-888	FeKo Typ J	-	-	-	-	-	■	■	■	■	-	■	■	-	-	-	-	-	-	-				
CLASSIC Water TT-1548 E	90	20	12	60	4	^{b)}	5	-	-	70	8			■	■	■	■	■	-	-	■	■	■	-	■	■	■	■ ⁴	■ ⁴	■ ⁴	-	-	-			
CLASSIC Water TT-1500 W	90	75	48	285	4.6	^{c)}	-	-	285	80	-			■	-	■	□	-	-	■	■	■	■	□	■	■	□	□ ⁴	□ ⁴	□ ⁴	-	-	-			
CLASSIC Water TT-1368 W	90	70	48	250	4.5	^{a)}	-	400	-	70	-			■	-	-	□	-	-	■	■	■	■	□	■	■	□	□ ⁴	□ ⁴	□ ⁴	-	-	-			
CLASSIC Water TT-1368 W	90	100	72	250	4.5	^{a)}	-	400	-	70	-			■	-	-	□	-	-	■	■	■	■	□	■	■	□	□ ⁴	□ ⁴	□ ⁴	-	-	-			
CLASSIC Water TT-1368 W	90	100	96	250	4.5	^{a)}	-	400	-	70	-			■	-	-	□	-	-	■	■	■	■	□	■	■	□	□ ⁴	□ ⁴	□ ⁴	-	-	-			
CLASSIC Water TT-1368 V	90	100	72	580	4.1	^{a)}	-	400	-	80	-			■	-	-	□	-	-	■	■	■	■	■	■	■	□	□ ⁴	□ ⁴	□ ⁴	-	-	-			
CLASSIC Water TT-1368 V	90	100	96	580	4.1	-	-	400	-	80	-			■	-	-	□	-	-	■	■	■	■	■	■	■	□	□ ⁴	□ ⁴	□ ⁴	-	-	-			
CLASSIC Water TT-1368 V	90	100	144	580	4.1	^{a)}	-	400	-	80	-			■	-	-	□	-	-	■	■	■	■	■	■	■	□	□ ⁴	□ ⁴	□ ⁴	-	-	-			
MATIC Water 90 18 E	90	20	18	60	4	^{a)}	50	130	-	90	8	IRIS	Pt100	■	■	■	□ ³	■	■	■	■	■	■	■	■	□ ³	□ ³	□ ³	□ ¹	□ ²	□ ²	□ ²	■	■		
MATIC Water 90 18 H	90	20	18	60	7	^{a)}	50	130	-	90	8			■	■	■	□ ³	■	■	■	■	■	■	■	■	■	□ ³	□ ³	□ ³	□ ¹	□ ²	□ ²	□ ²	■	■	
MATIC Water 90 18 K	90	40	18	200	4.3	^{a)}	200	400	-	90	8			■	■	■	□ ³	■	■	■	■	■	■	■	■	■	□ ³	□ ³	□ ³	□ ¹	□ ²	□ ²	□ ²	■	■	
MATIC Water 90 27 K	90	40	27	200	4.3	^{a)}	200	400	-	90	8			■	■	■	□ ³	■	■	■	■	■	■	■	■	■	■	□ ³	□ ³	□ ³	□ ¹	□ ²	□ ²	□ ²	■	■
MATIC Water 90 36 K	90	40	36	200	4.3	^{a)}	200	400	-	90	8			■	■	■	□ ³	■	■	■	■	■	■	■	■	■	■	□ ³	□ ³	□ ³	□ ¹	□ ²	□ ²	□ ²	■	■
MATIC Water 90 45 K	90	40	45	200	4.3	^{a)}	200	400	-	90	8			■	■	■	□ ³	■	■	■	■	■	■	■	■	■	■	□ ³	□ ³	□ ³	□ ¹	□ ²	□ ²	□ ²	■	■

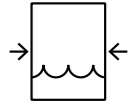
^{a)} indirect, ^{b)} air cooled, ^{c)} direct, ■ standard, □ optional, - not possible
I/O Modul 1, Manufacturer protocols (RS-232, RS-485, CAN, Current-Loop)

I/O Modul 2, Profinet, EtherNet/IP, Profibus

I/O Modul 3, 3 x Digital output (changeover switch), 2 x Digital input (on/off), 2 x Analog output, 2 x Analog input, 1 x ext. Temperature sensor

¹ included in I/O module 1, ² included in I/O module 2, ³ included in I/O module 3, ⁴ included in MP-988



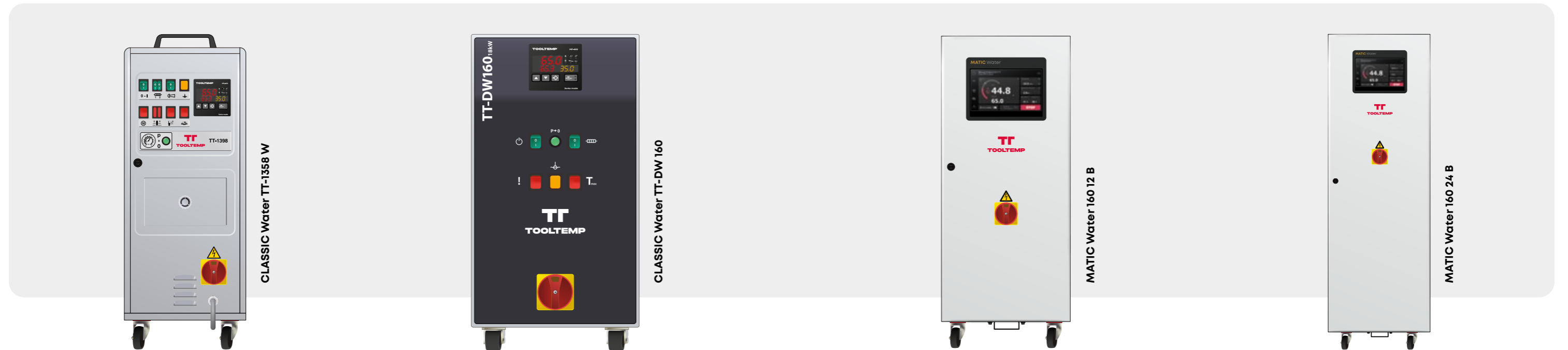


3 Pressurised water temperature control units

CLASSIC Water, **MATIC** Water, Heat transfer medium water up to 160°C

Product	Max. temperature	Heating capacity	Pump capacity	Pump pressure	with booster pump	Cooling system	Tubular heat exchanger	Plate heat exchanger	Direct cooling	Suction capacity vacuum	Controller	Temperature sensor	Flow control	Leakstopper device	Pressure relief	Mould drain	Temperature regulation at the consumer	Time-limited water refill	Automatic refill	Level control	Visual fault indications	Acoustic warning	Pressure regulation	0-10 V input/output	4-20 mA input	4-20 mA output	RS-232, RS-485, Current-Loop, CAN	Profibus interface	Profinet interface	Ethernet/IP	OPC-UA interface	Web interface (LAN cable, WiFi)		
	°C	kW	l/min.	bar			kW	kW	kW	mWS																								
CLASSIC Water TT-1398 N	140	6	110	5	-	a)	20	-	-	-			■	-	■	-	-	-	-	■	■	■	■	-	■	■	□	□ ⁴	□ ⁴	-	-	-	-	
CLASSIC Water 140 12 N n *	140	12	110	5	-	a)	60	-	-	8			■	-	■	-	-	-	-	■	■	■	■	-	■	■	□	□ ⁴	-	-	-	-	-	
CLASSIC Water 140 12 N **	140	12	110	5	-	a), c)	50	-	60 at 50°C	8			■	■	■	■	■	-	-	■	■	■	■	-	■	■	□	□ ⁴	-	-	-	-	-	
CLASSIC Water TT-138 N	140	24	110	5	-	a), c)	70	-	60 at 60°C	8			■	■	■	■	■	-	-	■	■	■	■	-	■	■	□	□ ⁴	-	-	-	-	-	
CLASSIC Water TT-1358 W	130	48	250	4.5	-	a)	180	400 at 70°C	-	-	MP-888	FeKo Typ J	■	-	■	-	-	-	-	■	■	■	■	□	■	■	□	□ ⁴	□ ⁴	□ ⁴	-	-	-	-
CLASSIC Water TT-30/160													■	-	■	-	-	-	-	■	■	■	■	-	■	■	-	-	-	-	-	-	-	
Cold water circuit	90	6	75	6.5	■	a)	-	200 at 90°C	-																									
Hot water circuit	160	12	75	6.5	■	a)	80 at 160 °C	-																										
CLASSIC Water TT-DW160 9	160	9	36	5	■	a)	-	40 at 150°C	-	-			■	-	■	-	-	-	-	■	■	■	■	-	■	■	□	□ ⁴	□ ⁴	□ ⁴	-	-	-	-
CLASSIC Water TT-DW160 18	160	18	36	5	■	a)	-	40 at 150°C	-	-			■	-	■	-	-	-	-	■	■	■	■	-	■	■	□	□ ⁴	□ ⁴	□ ⁴	-	-	-	-
MATIC Water 160 12 B	160	12	75	6.5	■	a), c)	65	-	60 at 50°C	8	IRIS	Pt100	■	■	■	■	□ ³	■	■	■	■	■	■	■	■	□ ³	□ ³	□ ³	□ ¹	□ ²	□ ²	□ ²	■	■
MATIC Water 160 24 B	160	24	75	6.5	■	a), c)	85	-	60 at 60°C	8			■	■	■	■	□ ³	■	■	■	■	■	■	■	■	□ ³	□ ³	□ ³	□ ¹	□ ²	□ ²	□ ²	■	■

a) indirect, b) air cooled, c) direct, ■ standard, □ optional, - not possible
 I/O Modul 1, Manufacturer protocols (RS-232, RS-485, CAN, Current-Loop)
 I/O Modul 2, Profinet, EtherNet/IP, Profibus
 I/O Modul 3, 3 x Digital output (changeover switch), 2 x Digital input (on/off), 2 x Analog output, 2 x Analog input, 1 x ext. Temperature sensor
¹ included in I/O module 1, ² included in I/O module 2, ³ included in I/O module 3, ⁴ included in MP-988
 * former TT-142 N, ** former TT-137 N





MATIC Water 160 24 B BP

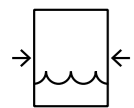


OIL

temperature control units

Heat transfer medium oil up to 360°C

- | | |
|----------------------------------|-------------------|
| ① Main switch | ⑥ Heating |
| ② Water-filter | ⑦ Non-return flap |
| ③ Level switch for level control | ⑧ Heat exchanger |
| ④ Flow control | ⑨ Expansion tank |
| ⑤ Pump | |

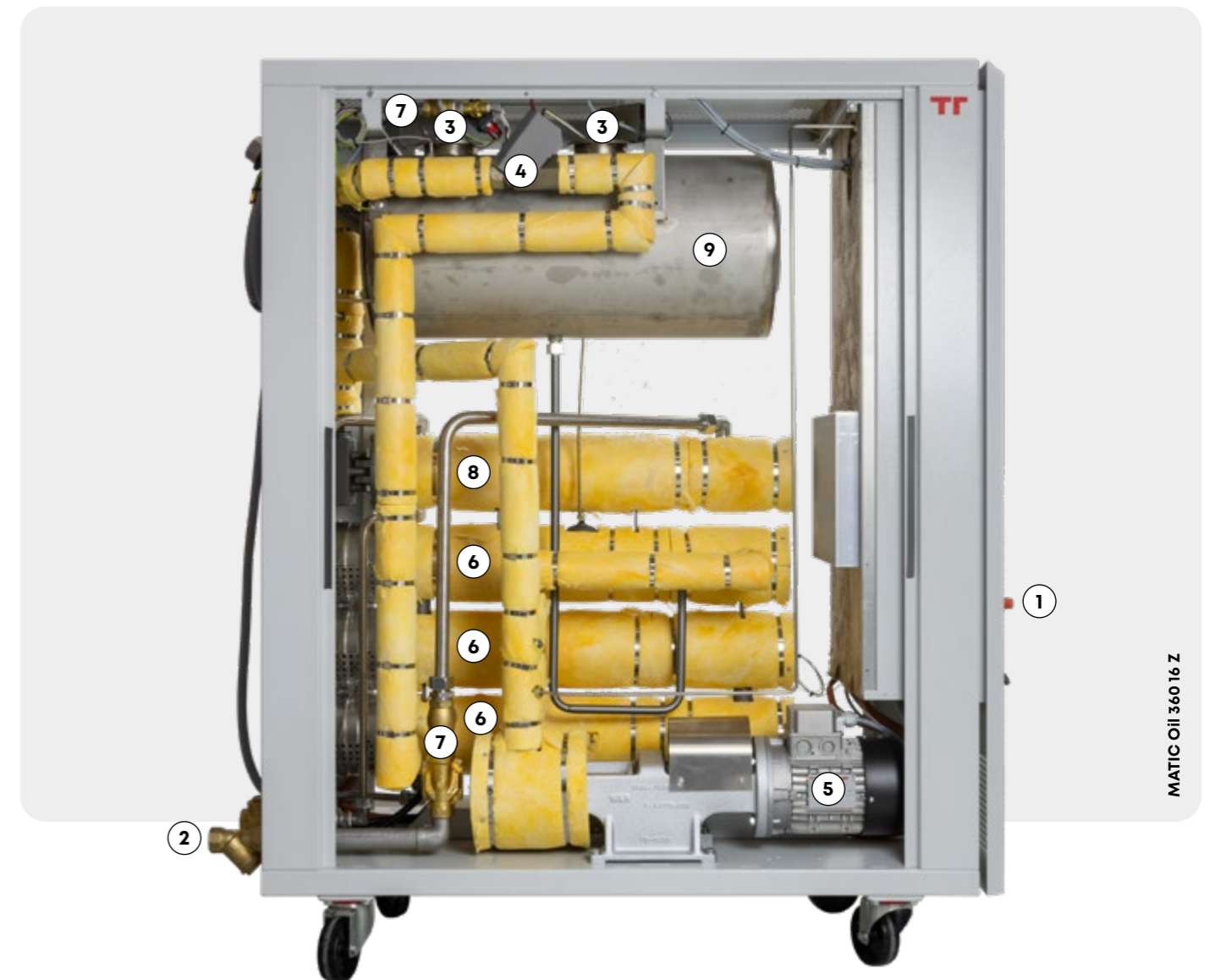


PRESSURISED

water temperature control units

Heat transfer medium water up to 160°C

- | | |
|----------------------------|-------------------|
| ① Thermostat | ⑦ Solenoid valve |
| ② Probe level control | ⑧ Pneumatic valve |
| ③ Flow control | ⑨ Water filter |
| ④ Pump | ⑩ Safety valve |
| ⑤ Pressure increasing pump | ⑪ Expansion tank |
| ⑥ Heating | |



MATIC Oil 360 16 Z



4 Oil temperature control units

CLASSIC Oil, MATIC Oil, Heat transfer medium oil up to 360°C

Product	Max. temperature °C	Max. filling amount l	Expansion volume l	Heating capacity kW	Pump capacity l/min.	Pump pressure bar	Axial face sealed	Magnetic drive	Cooling system	Tubular heat exchanger	Plate heat exchanger	At flow temperature °C	Suction capacity vacuum mWS	Controller		Temperature sensor	Flow control	Leakstopper device	Mould drain	Temperature regulation at the consumer	Level control	Visual fault indications	Acoustic warning	Pressure regulation	2-circuit version	0-10 V input/output	4-20 mA input	4-20 mA output	RS-232, RS-485, Current-Loop, CAN	Profibus interface	Profinet interface	Ethernet/IP	OPC-UA interface	Web interface (LAN cable, WiFi)		
														MP-888	FEKO Typ J																					
CLASSIC Oil 200 8 Z *	200	8	6	8	100	5.5	■	□ ^{o)}	20	-		200	8	MP-888	FEKO Typ J	■	■	■	■	■	■	■	■	-	-	■	■	-	-	-	-	-	-	-	-	
CLASSIC Oil TT-288 Z	250	9	11	8	100	5.5	■	□ ^{o)}	60	-		250	8	MP-888	FEKO Typ J	■	■	■	■	■	■	■	■	-	-	■	■	□	□ ⁴	□ ⁴	□ ⁴	-	-	-	-	
CLASSIC Oil TT-300 Z	300	9	17	12	100	5.5	■	□ ^{o)}	60	-		290	8	MP-888	FEKO Typ J	■	■	■	■	■	■	■	■	-	-	■	■	□	□ ⁴	□ ⁴	□ ⁴	-	-	-	-	
CLASSIC Oil TT-390 Z	360	15	16	16	100	5.5	■	□ ^{o)}	90	-		360	8	MP-888	FEKO Typ J	■	■	■	■	■	■	■	■	-	-	■	■	□	-	-	-	-	-	-	-	
CLASSIC Oil TT-390 Z	360	21	16	24	100	5.5	■	□ ^{o)}	90	-		360	8	MP-888	FEKO Typ J	■	■	■	■	■	■	■	■	-	-	■	■	□	-	-	-	-	-	-	-	
CLASSIC Oil TT-508 X	300	75	75	48	260	4	■	□ ^{o)}	480	-		300	-	MP-888	FEKO Typ J	■	-	-	□	■	■	■	■	□	-	■	■	□	□ ⁴	□ ⁴	□ ⁴	-	-	-	-	
CLASSIC Oil TT-510 X	300	125	100	96	260	4	■	□ ^{o)}	480	-		300	-	MP-888	FEKO Typ J	■	-	-	□	■	■	■	■	□	-	■	■	□	□ ⁴	□ ⁴	□ ⁴	-	-	-	-	
CLASSIC Oil TT-708 Y	300	100	100	72	500	4	■	□ ^{o)}	600	-		300	-	MP-888	FEKO Typ J	■	-	-	□	■	■	■	■	■	-	■	■	□	□ ⁴	□ ⁴	□ ⁴	-	-	-	-	
CLASSIC Oil TT-708 Y	300	200	100	120	500	4	■	□ ^{o)}	600	-		300	-	MP-888	FEKO Typ J	■	-	-	□	■	■	■	■	■	-	■	■	□	□ ⁴	□ ⁴	□ ⁴	-	-	-	-	
CLASSIC Oil TT-708 Y	300	200	100	144	500	4	■	□ ^{o)}	600	-		300	-	MP-888	FEKO Typ J	■	-	-	□	■	■	■	■	■	-	■	■	□	□ ⁴	□ ⁴	□ ⁴	-	-	-	-	
CLASSIC Oil TT-407 Z	240	11	16	8	100	5.5	■	- ^{o)}	67	143 at 80°C		230	-	MP-988	Pt100	■	-	-	■	■	■	■	■	■	-	■	■	□	□ ⁴	□ ⁴	□ ⁴	-	-	-	-	
CLASSIC Oil TT-409 Z	240	60	36	24	100	5.5	■	- ^{o)}	93	150 at 80°C		230	-	MP-988	Pt100	■	-	-	■	■	■	■	■	■	-	■	■	□	□ ⁴	□ ⁴	□ ⁴	-	-	-	-	
CLASSIC Oil TT-410 X	240	75	75	48	260	4	■	- ^{o)}	150	175 at 80°C		230	-	MP-988	Pt100	■	-	-	■	■	■	■	■	■	-	■	■	□	□ ⁴	□ ⁴	□ ⁴	-	-	-	-	
CLASSIC Oil TT-608 Z														MP-888	FEKO Typ J	■	-	-	-	■	■	■	-	-	■	■	-	-	-	-	-	-	-	-		
Hot oil circuit	300	50	75	24	100	5.5	■	-	-	-	-	-	-	MP-888	FEKO Typ J																					
Cold oil circuit	80	50	-	-	100	5.5	■	- ^{o)}		93		90	-	MP-888	FEKO Typ J	■	-	-	-	■	■	■	-	-	■	■	-	-	-	-	-	-	-	-	-	
CLASSIC Oil TT-608 Z														MP-888	FEKO Typ J																					
Hot oil circuit	300	50	75	48	100	5.5	■	-	-	-	-	-	-	MP-888	FEKO Typ J																					
Cold oil circuit	80	50	-	-	100	5.5	■	- ^{o)}		93		90	-	MP-888	FEKO Typ J																					
MATIC Oil 300 12 Z **	300	9	17	12	100	5.5	■	□ ^{o)}	60	-		290	8	IRIS	Pt100	■	■	■	□ ³	■	■	■	■	-		□ ³	□ ³	□ ³	□ ¹	□ ²	□ ²	□ ²	■	■		
MATIC Oil 360 16 Z	360	20	36	16	100	5.5	■	□ ^{o)}	90	-		360	8	IRIS	Pt100	■	■	■	□ ³	■	■	■	■	-		□ ³	□ ³	□ ³	□ ¹	□ ²	□ ²	□ ²	■	■		
MATIC Oil 360 24 Z	360	26	36	24	100	5.5	■	□ ^{o)}	90	-		360	8	IRIS	Pt100	■	■	■	□ ³	■	■	■	■	-		□ ³	□ ³	□ ³	□ ¹	□ ²	□ ²	□ ²	■	■		
MATIC Oil 360 32 Z	360	27	36	32	100	5.5	■	□ ^{o)}	160	-		360	8	IRIS	Pt100	■	■	■	□ ³	■	■	■	■	-		□ ³	□ ³	□ ³	□ ¹	□ ²	□ ²	□ ²	■	■		
MATIC Oil 360 48 Z	360	70	36	48	100	5.5	■	□ ^{o)}	230	-		360	8	IRIS	Pt100	■	■	■	□ ³	■	■	■	■	-		□ ³	□ ³	□ ³	□ ¹	□ ²	□ ²	□ ²	■	■		

^{o)} indirect, ^{b)} air cooled, ^{c)} direct, ■ standard, □ optional, - not possible

I/O Modul 1, Manufacturer protocols (RS-232, RS-485, CAN, Current-Loop)

I/O Modul 2, Profinet, EtherNet/IP, Profibus

I/O Modul 3, 3 x Digital output (changeover switch), 2 x Digital input (on/off), 2 x Analog output, 2 x Analog input, 1 x ext. Temperature sensor

¹ included in I/O module 1, ² included in I/O module 2, ³ included in I/O module 3, ⁴ included in MP-988

* former TT-248 Z, ** availability will be announced



4 Oil temperature control units

CLASSIC Oil, MATIC Oil, Heat transfer medium oil up to 360°C

Product	Max. temperature °C	Max. filling amount l	Expansion volume l	Heating capacity kW	Pump capacity l/min.	Pump pressure bar	Axial face sealed Magnetic drive Cooling system Tubular heat exchanger	Plate heat exchanger kW	At flow temperature °C	Suction capacity vacuum mWS	Controller	Temperature sensor	Flow control	Leakstopper device	Mould drain	Temperature regulation at the consumer	Level control	Visual fault indications	Acoustic warning	Pressure regulation	2-circuit version	0-10 V input/output	4-20 mA input	4-20 mA output	RS-232, RS-485, Current-Loop, CAN	Profibus interface	Profinet interface	Ethernet/IP	OPC-UA interface	Web interface (LAN cable, WiFi)		
Dual units																																
CLASSIC Oil TT-288/2 Z	250	16	6	2 x 8	2 x 100	5.5	■ □ ^{a)}	2 x 60	-	200	8	MP-888	FEKO Typ J	■	■	■	■	■	■	■	-	■	■	□	□ ⁴	□ ⁴	□ ⁴	-	-	-		
CLASSIC Oil TT-390/2 Z	360	30	36	2 x 16	2 x 100	5.5	■ □ ^{a)}	2 x 90	-	360	8			■	■	■	■	■	■	■	-	■	■	□	-	-	-	-	-	-	-	
CLASSIC Oil TT-390/2 Z	360	42	36	2 x 24	2 x 100	5.5	■ □ ^{a)}	2 x 90	-	360	8			■	■	■	■	■	■	■	-	■	■	□	-	-	-	-	-	-	-	
CLASSIC Oil TT-390/2 Z	360	42	36	2 x 36	2 x 100	5.5	■ - ^{a)}	2 x 90	-	360	8			■	■	■	■	■	■	■	-	■	■	□	□ ⁴	□ ⁴	□ ⁴	-	-	-		
MATIC Oil 360/2 16 Z	360	30	36	2 x 16	2 x 100	5.5	■ □ ^{a)}	2 x 90	-	360	8	IRIS	Pt100	■	■	■	□ ³	■	■	■	■	■	□ ³	□ ³	□ ³	□ ¹	□ ²	□ ²	□ ²	■	■	
MATIC Oil 360/2 24 Z	360	42	36	2 x 24	2 x 100	5.5	■ □ ^{a)}	2 x 90	-	360	8			■	■	■	□ ³	■	■	■	■	■	■	□ ³	□ ³	□ ³	□ ¹	□ ²	□ ²	□ ²	■	■
MATIC Oil 360/2 36 Z*	360	42	36	2 x 36	2 x 100	5.5	■ □ ^{a)}	2 x 90	-	360	8			■	■	■	□ ³	■	■	■	■	■	■	□ ³	□ ³	□ ³	□ ¹	□ ²	□ ²	□ ²	■	■

^{a)} indirect, ^{b)} air cooled, ^{c)} direct, ■ standard, □ optional, - not possible
I/O Modul 1, Manufacturer protocols (RS-232, RS-485, CAN, Current-Loop)

I/O Modul 2, Profinet, EtherNet/IP, Profibus

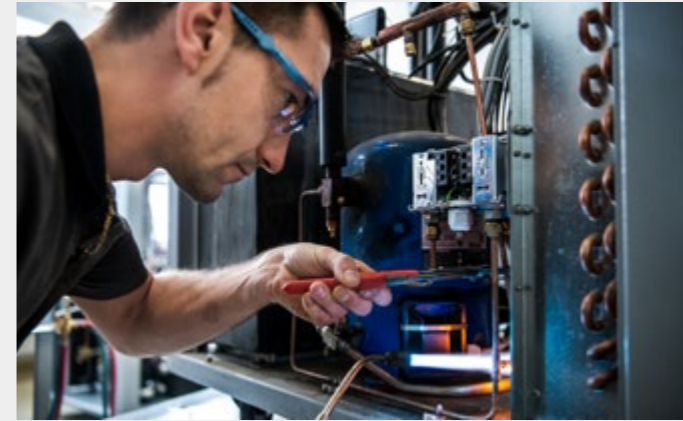
I/O Modul 3, 3 x Digital output (changeover switch), 2 x Digital input (on/off), 2 x Analog output, 2 x Analog input, 1 x ext. Temperature sensor

¹ included in I/O module 1, ² included in I/O module 2, ³ included in I/O module 3, ⁴ included in MP-988

* Availability will be announced



Customer service



Commissioning and Maintenance

The perfect start to your production process - our commissioning support

A smooth start is crucial for the long-term success of your production processes. Our experienced service team will assist you with commissioning your new temperature control and water cooling units if required. Professional commissioning provides the perfect foundation for safe, efficient, and reliable production. If you wish, we can accompany you right through to the first production run.

Reliability you can count on

Our Customer Service Centre is your expert partner for all aspects of maintaining your production equipment. We provide tailor-made solutions to meet your needs throughout your equipment's entire life cycle.

Service – comprehensive support for your systems

Regular servicing prevents costly production downtime and extends the lifetime of your equipment. Our experienced service technicians bring extensive knowledge gained from numerous on-site assignments and in-house repairs – expertise that directly benefits your operation.

Maintenance for maximum reliability

Regular maintenance of your temperature control and water cooling units ensures smooth production, improves operational safety, and increases equipment longevity. This helps protect your investment and maintain consistent performance over time.

Overhaul work – everything from a single source

We offer comprehensive support for overhaul and revision work: from equipment analysis and tailored recommendations to service kits, repair and replacement parts, maintenance and overhaul work, and recommissioning. Everything is carefully tailored to your requirements for long-term, reliable system performance.

Customer service

Technical Support

Fast assistance and expert advice – available worldwide

Our technical experts are on hand to answer any questions you may have about operating your temperature control and cooling units. We help you to minimise production interruptions and ensure the long-term efficiency of your systems. Whether you need to report a fault, have an operational question, we support you with in-depth expertise and practical solutions.

Direct access to our specialists

Using modern diagnostic tools, we can analyse and resolve many issues remotely – quickly, efficiently, and without unnecessary downtime.

Support throughout the entire life cycle

From initial commissioning and ongoing operation to software updates and process optimisation – our technical support team is there for you throughout the entire service life of your systems.

Spare Parts

Spare parts – fast, reliable and globally available

Thanks to our extensive manufacturing capabilities and well-stocked spare parts warehouses worldwide, we can supply the right components quickly and reliably. We also offer suitable spare parts and solutions for older units. This ensures long-term planning reliability and allows you to operate your Tool-Temp temperature control and cooling units efficiently for many years while protecting your investment for the future.

Repairs

Repairs – fast, reliable and with minimal downtime.

Unexpected events always seem to happen at the worst possible moment. There are many causes of production downtime due to equipment malfunctions. To help you get back into production quickly, our Customer Service Centre is on hand to provide expert assistance when needed. In the event of major breakdowns, we can provide a replacement unit to keep your production line running smoothly. Thanks to our extensive manufacturing capabilities and well-stocked global spare parts warehouse, we can quickly and reliably supply the right components for smooth recommissioning and maximum plant availability.

Rental and testing equipment

High flexibility thanks to rental and test equipment

Do you need additional production capacity for a specific period of time, or would you like to test a device in practice before deciding to purchase it? Our rental and trial solutions give you independence and allow you to plan your investments carefully. They enable you to secure predictable production costs for a limited timeframe, without having to make an immediate new purchase. This solution provides maximum flexibility for your production and helps you to efficiently bridge capacity peaks. If you are interested, we will be happy to provide you with a customised quote for a solution tailored to your needs

Software Updates

Always up to date – with the latest software versions

Regular software updates ensure that your Tool-Temp units run with the latest features, improvements and security standards. This allows you to benefit from optimal performance, maximum reliability and continuous development of your systems. You can download the latest software versions and update packages for your units here.

If you need assistance with installation or have any questions regarding the correct version, our technical support team will be happy to help.

Please contact us!

We would be happy to provide you with a quote.

HERE FOR OUR CUSTOMERS

Tool-Temp AG

Industriestrasse 30
CH-8583 Sulgen
Schweiz

T +41 71 644 77 77

E info@tool-temp.ch

W tool-temp.ch